



*Catalog*

**ENTER**



**ATMOSPHERE ACTS FOR EVENTS OF EXCEPTION**



**LIVING TOPIARY**  
**PICTURES & VIDEO**



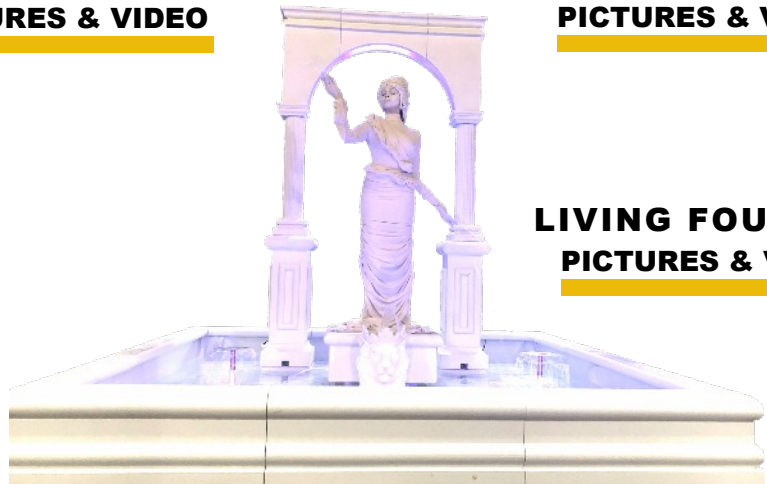
**LIVING STATUES**  
**PICTURES & VIDEO**



**LIVING FLOWER**  
**PICTURES & VIDEO**



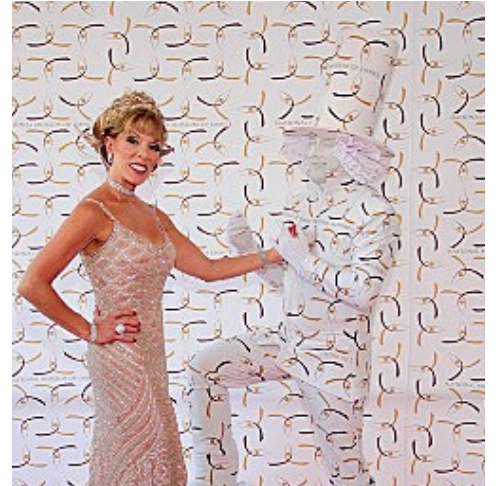
**LIVING LAMP**  
**PICTURES & VIDEO**



**LIVING FOUNTAIN**  
**PICTURES & VIDEO**

# Show Selection

**LIVING FLORAL TREE  
PICTURES & VIDEO**



**LIVING WALL  
PICTURES & VIDEO**



**HOLIDAY SEASON  
PICTURES & VIDEO**



**LIVING TABLE  
PICTURES & VIDEO**



**THE MARIONETTE SHOW  
PICTURES & VIDEO**



**THE ARCH DRAGON  
PICTURES & VIDEO**



**THE BUBBLE  
PICTURES & VIDEO**

# The Living Topiary

VIDEO & PICTURES





# The Living Topiary

## The show

Marriage of Nature in a Human form, the Living Topiary is a spectacular live interactive entertainment. The 9 feet tall Living Topiary is a focal point at your event that mesmerizes the audience with its graceful postures and a wonderful photo opportunity. .

## Description

The Living Topiary show is an interactive atmosphere act, available in 2 possible formats:

- As a Living Statue
- Choreographed with music

The Living Topiary show is a stationary act on pedestal.

## Building a Program

Scheduling the show at your event is easy. Each presentation, also called a set, has a 30 minute format.

- Booking a single performer allows for one 30 minute show per hour for up to 4 hours, with 30 minute breaks between sets. Maximum number of sets: 4.

- Booking two performers or more, gives two options:

*Option 1:* Making a statement by having all your Living Topiaries perform at the same time. They will break at the same time also.

*Option 2:* Offering a continuous exposure of the show for up to 4 hours, by having your performers rotate on set; when one performs, the other breaks.

Please contact us to work out a set schedule for your event.

## Costume Quality

The Living Topiary costume is made of 3 parts:

- The dress, with 5 colors options: white, green, gold, silver, or red
- The base, covered with thousands of rose petals of matching color with the dress.
- The floral décor on the headpiece and forearms. Your options are:
  - Roses: White, red, pink, gold, silver, orange, green, purple or fuchsia
  - Boxwood greenery
  - Sunflowers

We also create new flower themes on demand.

# Living Topiary collection

NEXT ▶

MENU ▶

## DRESS OPTIONS



WHITE



GREEN



GOLD

SILVER



RED

## FLOWER OPTIONS

WHITE ROSES



Illuminated



BOXWOOD



RED ROSES



GREEN ROSES



SUNFLOWERS



GOLD ROSES



FUCHSIA ROSES



SILVER ROSES



PURPLE ROSES



PINK ROSES



ORANGE ROSES



## WHITE ILLUMINATIONS



## White Living Topiary



**RED ROSES**



**WHITE ROSES**



**PINK ROSES**



**ORANGE ROSES**



**PURPLE ROSES**



**FUCHSIA ROSES**



**GREEN ROSES**



## Gold Living Topiary



GOLD ROSES



RED ROSES

## Silver Living Topiary



## Green Living Topiary



**BOXWOOD**



**RED ROSES**



**SUNFLOWER**



**PURPLE ROSES**

# Red Living Topiary



**GOLD ROSES**



**WHITE ROSES**

# The Living Statue

**VIDEO & PICTURES**







# The Living Statues

## The show

The Living Statue show is among the most interactive and memorable live performing entertainment for theme events. Pick the costume that fits with the theme of your event and we will create memories for you.

## Description

The Living Statue show is an interactive atmosphere act. The show is usually stationary on pedestal. Some Living Statue models allow for the character to stroll among the audience if necessary.

## Costume Quality

A Living Statue costume creates the illusion of a stone or metal statue character. A professional Living Statue has a smooth on-color rendering which cannot be achieved by spray painting, It is a precise tailoring skill that integrates all parts of the statue: costume, pedestal and accessories.

## Building your program

Scheduling the show at your event is easy. Each presentation, also called a set, has a 30 minute format.

- Booking a single performer allows for one 30 minute show per hour for up to 4 hours, with 30 minute breaks between sets. Maximum number of sets: 4.

- Booking two performers or more, gives two options:

*Option 1:* Making a statement by having all your Living Statues perform at the same time. They will break at the same time also.

*Option 2:* Offering a continuous exposure of the show for up to 4 hours, by having your performers rotate on set; when one performs, the other breaks.

# Living Statue collection

NEXT ▶

MENU ▶



**SPECIALTY**



**CLASSICAL**



**INSPIRATIONAL**



**MILITARY**



**PATRIOTIC & ETHNIC**



**WONDERLAND, STEAM PUNK**



**HALLOWEEN & CHRISTMAS**



**SPORTS**



**NEW REPUBLIC**



**HOLLYWOOD**



# Living Statue - Speciality Collection



**THE DIVER**  
**SEAS - NATURE**



**THE ASTRONAUT**  
**TECHNOLOGY**



**THE WINDFARM**  
**ENERGY**



**THE ARTIST**  
**IMAGINATION**



**THE HARVEST**  
**LAND - NATURE**



**THE RACE CAR DRIVER**  
**AUTOMOTIVE**





1.



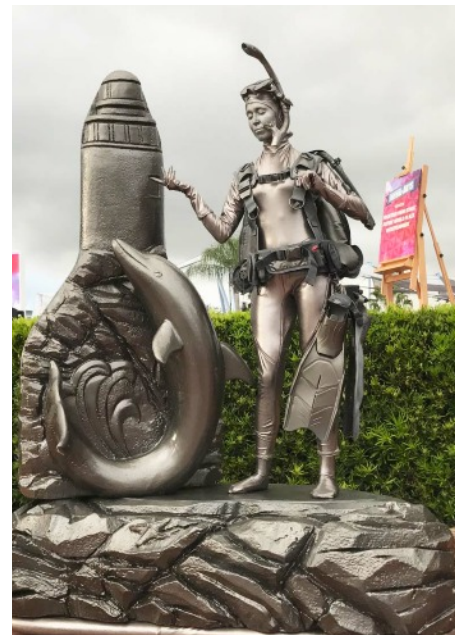
3.



2.



4.



5.

# Living Statue - Classical Collection



## GRECO-ROMAN

Female or Male



1.

**WHITE**



4.

**GOLD**



6.

**SILVER**



3.



5.



7.



2.

## Mermaid & Poseidon



BLUE - HOLOGRAM TAIL

GREEN - HOLOGRAM TAIL

## Art Living Statues



THE THINKER



MODERN ART MANNEQUINS

# Living Statue - Spiritual Collection



**LARGE WINGS GOLD ANGELS**

**MEDIUM WINGS ANGELS**



**LIVING BUDDHA**



**Gold**



**Silver**

# Halloween Collection



**PURPLE WITCH & YOUNG WIZARD**



**DARK ANGELS**

## Living Statue - Military Collection



**CONQUISTADOR**



**EXPLORER - COLUMBUS**



**GREEK SOLDIER**



# Asian Soldier - Terra cotta Soldier



## Living Statue - Patriotic Collection



**LADY LIBERTY**



**ABRAHAM LINCOLN**



**COLUMN STATUE**





## Silver Statue - Ethnic Collection



**HULA GIRLS - HAWAIIAN**



**EGYPTIANS**



**POLYNESIANS**

## Living Statue - Wonderland Collection



**RED**



**COPPER**



**YELLOW**

# Living Statue - Steam Punk & Orient Express



**STEAM PUNK**  
Gunpowder silver



**ORIENT EXPRESS**



**STEAM PUNK**  
Silver



## Living Statue - 18th Century



**WHITE**



**COPPER**



3.

4.

# Living Statue - New Republic: 17<sup>th</sup> Century



1.



2.



3.

# Living Statue - Hollywood Fame



**HOLLYWOOD AWARDS**

## **MUSICIANS**



**Red**



**ELVIS**



**MARYLIN**



**Orange**

**Yellow**

# Living Statue - Sports



**FOOTBALL PLAYER**



**BASKETBALL PLAYER**



**BASEBALL PLAYER**



**GOLF PLAYER**



**WORKING MEN**



**COWBOY**



**COWGIRL**

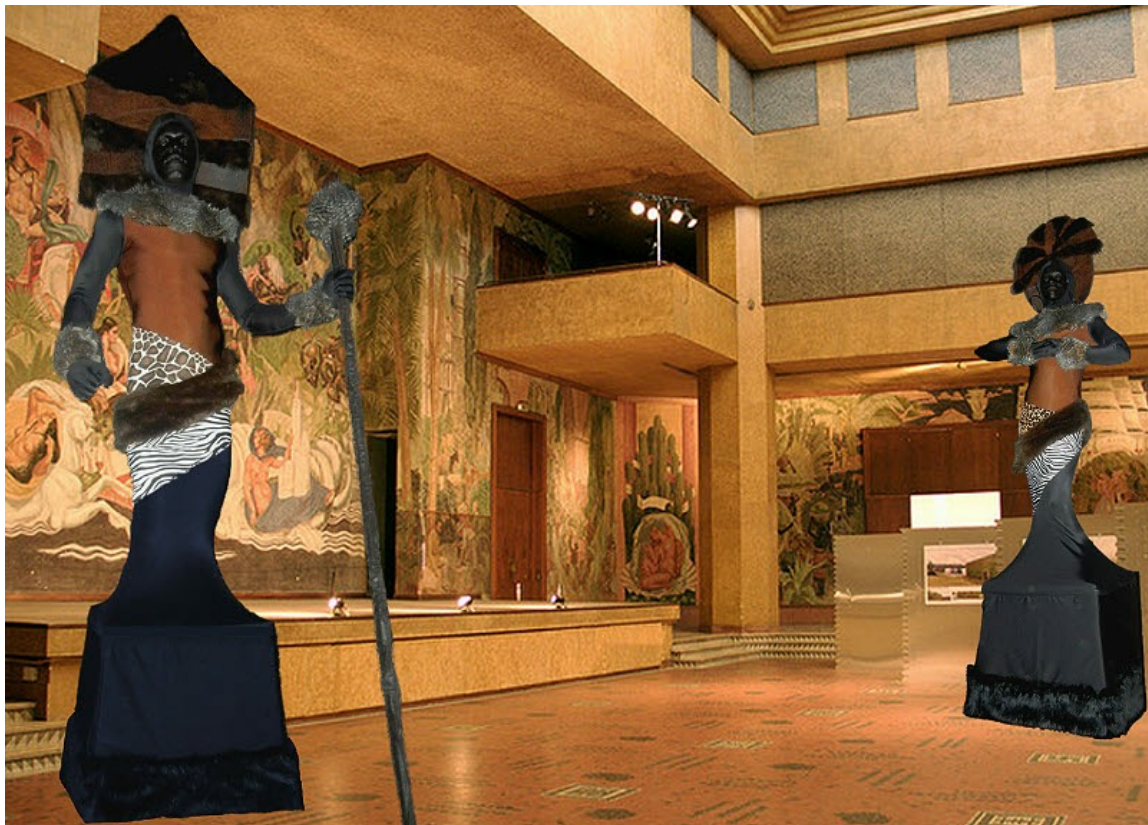
## Living Statue - African Beauty



**AFRICAN KING**



**AFRICAN QUEEN**





# Living Statue - African Animals



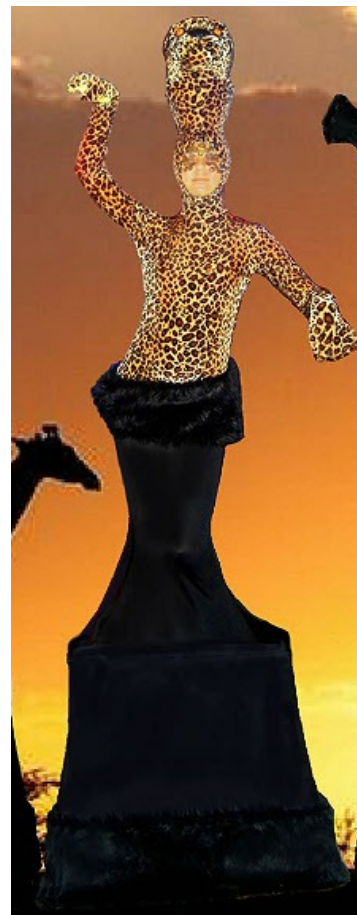
**GIRAFFE**



**LION**



**ZEBRA**



**CHEETAH**

# The Living Lamp

VIDEO & PICTURES







# The Living Lamp

## The show

The Living Lamp is An original performing act, interactive with the audience. It will give a touch of class to your event.

The costumes are theme-appropriate and enhance your event like no other.

## Description

The show is an interactive with the audience and a great photo opportunity for all.

It can be presented:

- On pedestal, as a living statue or
- Strolling among the audience.

## Costume Quality

With a wide costume collection, the Living Lamp show is adapted to practically any themed event:

13 costume, 5 lampshade variations and 10 LED light color offer you many Living Lamp options.

We also create Living Lamps on demand.

## Building your Program

Scheduling the show at your event is easy. Each presentation, also called a set, has a 30 minute format.

- Booking a single performer allows for one 30 minute show per hour for up to 4 hours, with 30 minute breaks between sets. Maximum number of sets: 4.

- Booking two performers or more, gives two options:

*Option 1:* Making a statement by having all your Living Lamps perform at the same time. They will break at the same time also.

*Option 2:* Offering a continuous exposure of the show for up to 4 hours, by having your performers rotate on set; when one performs, the other breaks.

# Living Lamp collection

NEXT ▶

MENU ▶



**SCULPTED MIRROR**



**NATURE GREEN**



**RED CARPET**



**VEGAS WHITE**



**RAVE WHITE**



**RAVE PINK**



**PATRIOTIC**



**ROYAL GOLD**



**ROYAL SILVER**



**SAFARI**



**DOLLAR BILL**



**SPORTING FAN**



**PARTY TIME**

## Living Lamp - Sculpted Mirror



### CLASSICAL LAMP SHADE



**White**

**Blue**

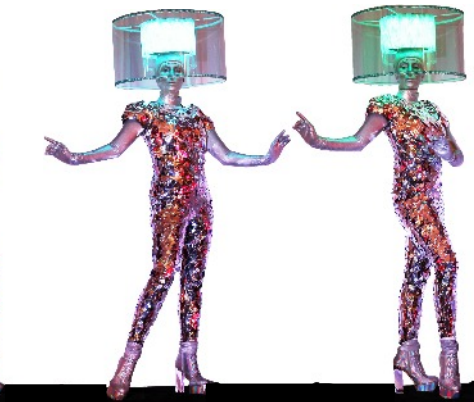
**Green**

**Purple**

**White**

**Green**

### LOGO- BRANDABLE LAMP SHADE



**White**

**Green**

## Living Lamp - Patriotic



## Living Lamp - Dollar Bill



### Lampshade Options



Classical



Victorian

# Living Lamp - Royal Silver



## MULTIPLE LAMP SHADE STYLE OPTIONS



**CLASSICAL**



**STAINED GLASS**



**VICTORIAN**



**LOGO BRANDABLE**

## MULTIPLE COLOR OPTIONS



**STARRY NIGHT**



# Living Lamp - Royal Gold

## Lampshade Options



Stained Glass



Victorian



Classical

# Living Lamp - Nature Green

## Lampshade Options



Victorian

Classical

Stained Glass



## Living Lamp - Fire & Ice



### MULTIPLE LAMPSHADE STYLE & COLOR OPTIONS



## Living Lamp - White Rave



### Lampshade Options

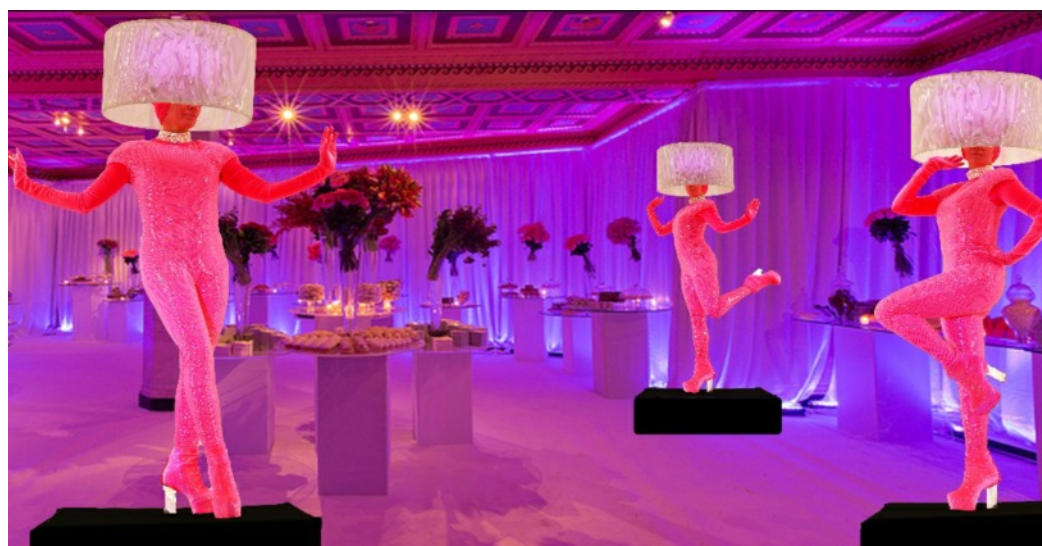


Classical



Logo brandable

## Living Lamp - Pink Rave



### Lampshade Options

Classical



Logo Brandable

## Living Lamp - African Safari



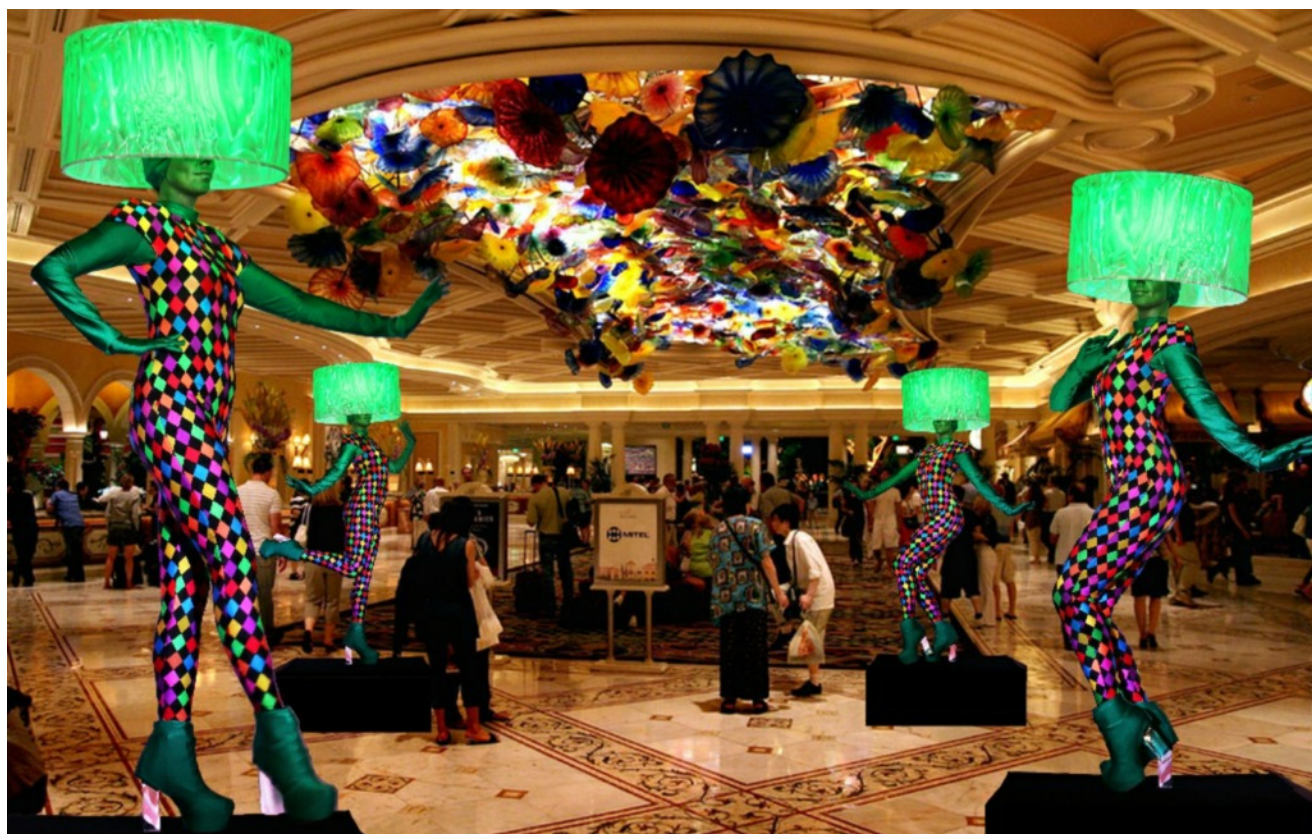
### MULTIPLE LAMPSHADE STYLE & COLOR OPTIONS



## Living Lamp - Checkers



# Living Lamp - Party Time



## Lampshade Options

**Classical**



**Victorian**





# The Living Fountain

## The show

The Living Fountain is a spectacular performing act featuring a live fountain character in costume, staged as a part of a beautiful operating fountain décor. Make it the centerpiece of your cocktail party or special event and create spectacular memories..

## The Fountain

The Living Fountain is a 9 ½ square fountain décor filled with 300 gallons of water and operating with jets and lights as a beautiful fountain.

The performance is in the show of the performer, acting as a fountain statue and an integrated part of the fountain.

## Building your program

Scheduling the show at your event is easy. Each presentation, also called a set, has a 30 minute format.

- Booking a single performer allows for one 30 minute show per hour for up to 4 hours, with 30 minute breaks between sets. Maximum number of sets: 4.
- Booking two performers allows for a continuous exposure of the show for up to 4 hours, by having your performers rotate on set; when one performs, the other breaks.

Please contact us to work out a set schedule for your event.



# The Living Flower

VIDEO & PICTURES









# The Living Flower

## The show

Very entertaining and interactive with the audience, the Living Flower show represents the Beauty of Nature in a human form. The 9 feet tall and 4 feet wide character is all grace, posing for the picture as a spectacular focal point at your event.

## Costume Quality

The costume is made of 2 parts: The petals and the body (dress). You can choose the color combination between the two:

- Available flower petal colors: blue, pink, yellow, white and red.
- Available body colors: green, white, gold, silver and red.

The base of the dress is covered with thousands of petals of matching color.

## Description

The Living Flower Show is presented on pedestal (stationary) and available in 3 possible formats:

- a) As a Living Statue
- b) As a Talking Flower
- c) Choreographed with music

## Building your Program

Scheduling the show at your event is easy. Each presentation, also called a set, has a 30 minute format.

- Booking a single performer allows for one 30 minute show per hour for up to 4 hours, with 30 minute breaks between sets. Maximum number of sets: 4.

- Booking two performers or more, gives two options:

*Option 1:* Making a statement by having all your Living Flowers perform at the same time. They will break at the same time also.

*Option 2:* Offering a continuous exposure of the show for up to 4 hours, by having your performers rotate on set; when one performs, the other breaks.

Please contact us to work out a set schedule for your event.

# Living Flower collection

NEXT ▶

MENU ▶



## FLOWER OPTIONS



RED



WHITE



YELLOW



PINK



BLUE

## DRESS OPTIONS



GREEN



WHITE



GOLD



SILVER

## **Living Flower**



**BLUE LIVING FLOWER**



**PINK LIVING FLOWER**



**YELLOW LIVING FLOWER**



**RED LIVING FLOWER**



**WHITE LIVING FLOWER**

## Living Flowers - White Dress



### ROSE OPTIONS

- WHITE
- PINK
- BLUE
- YELLOW
- RED

## Living Flowers - Gold Dress



### ALTERNATE DRESS

- SILVER



# The Living Floral Tree

**VIDEO & PICTURES**





The use of this e-catalog is governed by Florida law.

# The Living Floral Tree

## The show

The Living Floral Tree is a beautiful Stilt Show inspired by Nature. Strolling gracefully among the audience, the Living Floral Tree is captivating with elegance. The Living Floral Tree adapts perfectly to corporate or private functions.

## Costume Quality

The Living Floral Tree costume allows for flower variations in size and color to perfectly adapt to the theme and colors of your event.

Available flower collection:

- Bougainvillea: pink
- Orchid: white
- Hibiscus: yellow
- Roses: purple, pink, cream
- Birds of paradise
- Silver winterized

We can create any other flower décor on demand.

## Programming your show

Scheduling the show at your event is easy. Each presentation, also called a set, has a 30 minute format.

- Booking a single performer allows for one 30 minute show per hour for up to 4 hours, with 30 minute breaks between sets. Maximum number of sets: 4.

- Booking two performers or more, gives two options:

*Option 1:* Making a statement by having all your Living Floral Trees perform at the same time. They will break at the same time also.

*Option 2:* Offering a continuous exposure of the show for up to 4 hours, by having your performers rotate on set; when one performs, the other breaks. For events that require longer sets, a performer can provide up 3 sets of 40 minutes instead of 4 sets of 30 minutes.

Please contact us to work out a set schedule for your event.



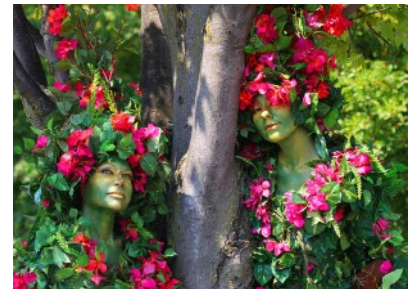
# Living Floral Tree collection

NEXT ▶

MENU ▶



**WHITE ORCHID**



**BOUGAINVILLEA**



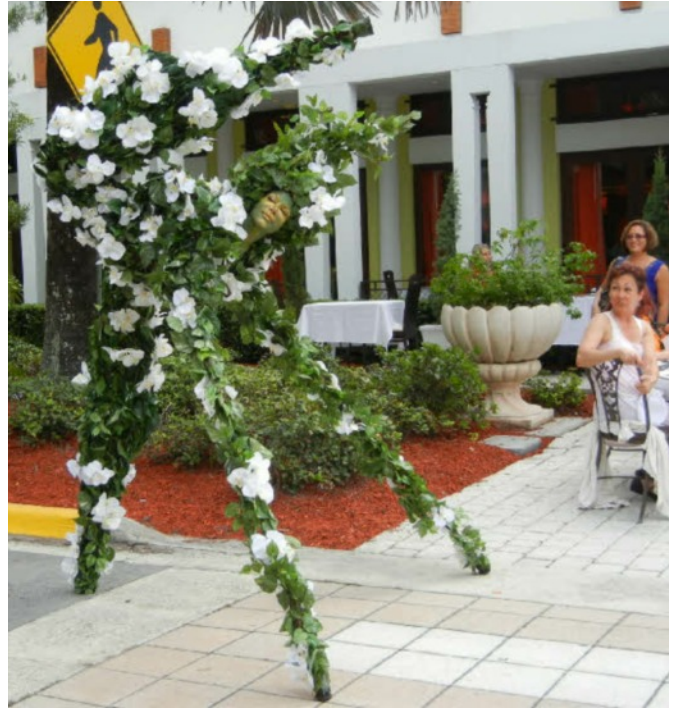
**HIBISCUS**



**ROSES**



## Living Floral Tree - White Hibiscus



## Living Floral Tree - Pink Bougainvillea



## Living Floral Tree - Other options



**YELLOW HIBISCUS**



**ORANGE ROSES**



**WINTERIZED - White & Silver**



**PINK & ORANGE ROSES**

# Live Shows for the Holiday Season

**VIDEO & PICTURES**







## Holiday Shows

### Living Nutcracker, Living Ornament, Giant Toys, Candy Man

#### The show

Our Holiday Season live shows are emblematic of the Holiday Season, very entertaining and spectacular to watch. The shows are versatile, perfectly adapted for public or private events, They allow for public interaction.

#### Description

Fun and interactive, our Holiday Season live shows illustrate the Holiday Season in the most spectacular fashion:

- THE LIVING NUTCRACKERS are lively and exciting to watch, either standing or strolling among the audience
- The 9 feet tall LIVING ORNAMENTS are sumptuous, a Christmas symbol of art and elegance.
- The 10 feet tall GIANT TOYS, are a plus size stilt show that speaks volume to every audience
- The CANDY MAN & WOMAN LIVING STATUES are incredibly sweet with their gift offering.

#### Programming your show

Scheduling the show at your event is easy. Each presentation, also called a set, has a 30 minute format.

- Booking a single performer allows for one 30 minute show per hour for up to 4 hours, with 30 minute breaks between sets. Maximum number of sets: 4.

- Booking two performers or more, gives two options:

*Option 1:* Making a statement by having all your Living Floral Trees perform at the same time. They will break at the same time also.

*Option 2:* Offering a continuous exposure of the show for up to 4 hours, by having your performers rotate on set; when one performs, the other breaks. For events that require longer sets, a performer can provide up 3 sets of 40 minutes instead of 4 sets of 30 minutes.

Please contact us to work out a set schedule for your event.

# Holiday Show collection

[NEXT](#)

[MENU](#)



**NUTCRACKERS - TOY SOLDIERS**



**LIVING ORNAMENTS**



**GIANT TOYS - 10 feet tall**



**SILVER CANDY MAN & WOMAN**

# The Living Nutcracker - A Toy Soldier

## 1. RED, GOLD & BLUE



## 2. BLUE, SILVER & WHITE



## 2. WHITE & SILVER





# The Giant Toys - Stilt Show



**THE DOLL**

**THE NUTCRACKER**

**GINGERBREAD  
MAN**

**THE BEAR**



## The Christmas Ornaments - White Ornaments



### ORNAMENT OPTIONS



# Living Ornaments - Gold



## ORNAMENT OPTIONS



1.



2.



5.



7.



9.



3.



4.



6.



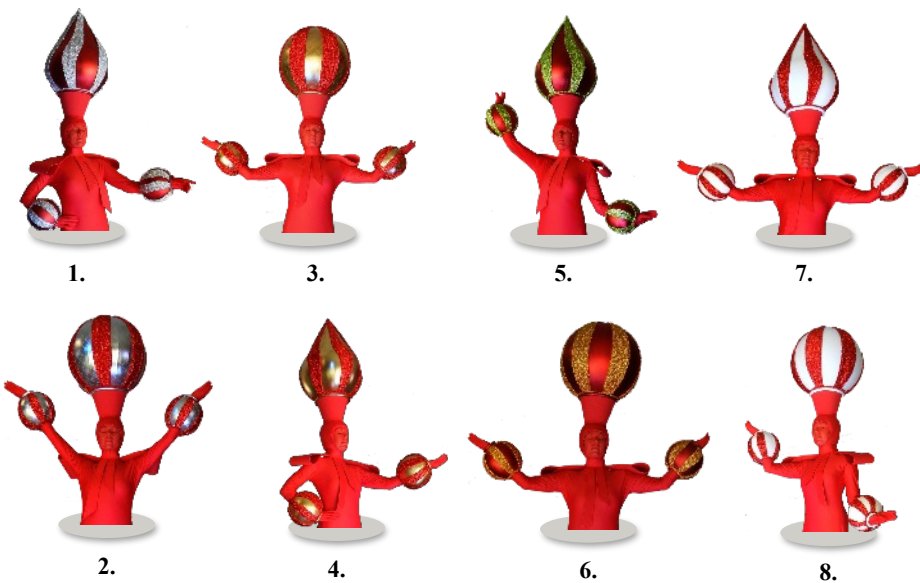
8.

## The Christmas Ornaments - Red Ornaments



**Silver Base**

### ORNAMENT OPTIONS

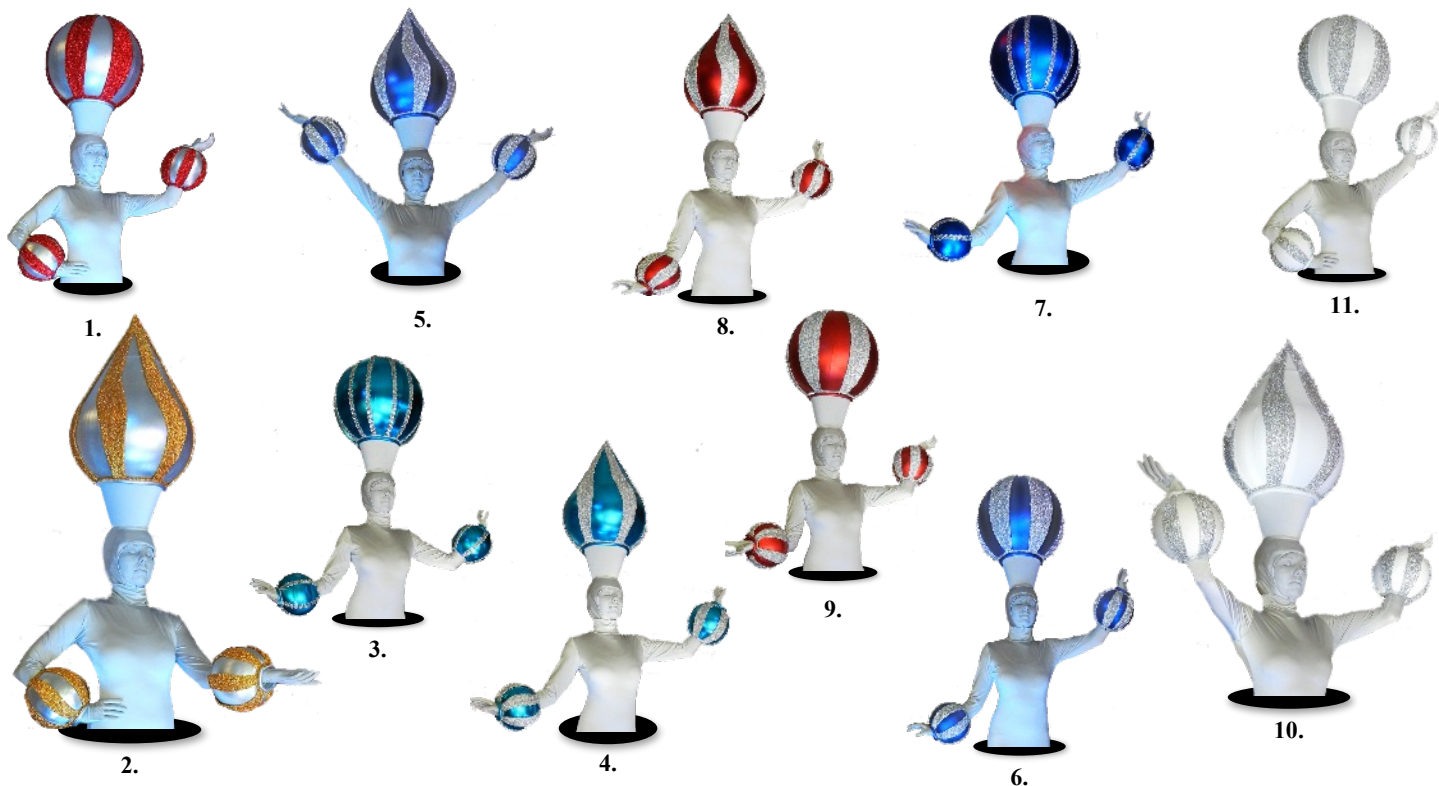


**Gold Base**

# Living Ornaments - Silver



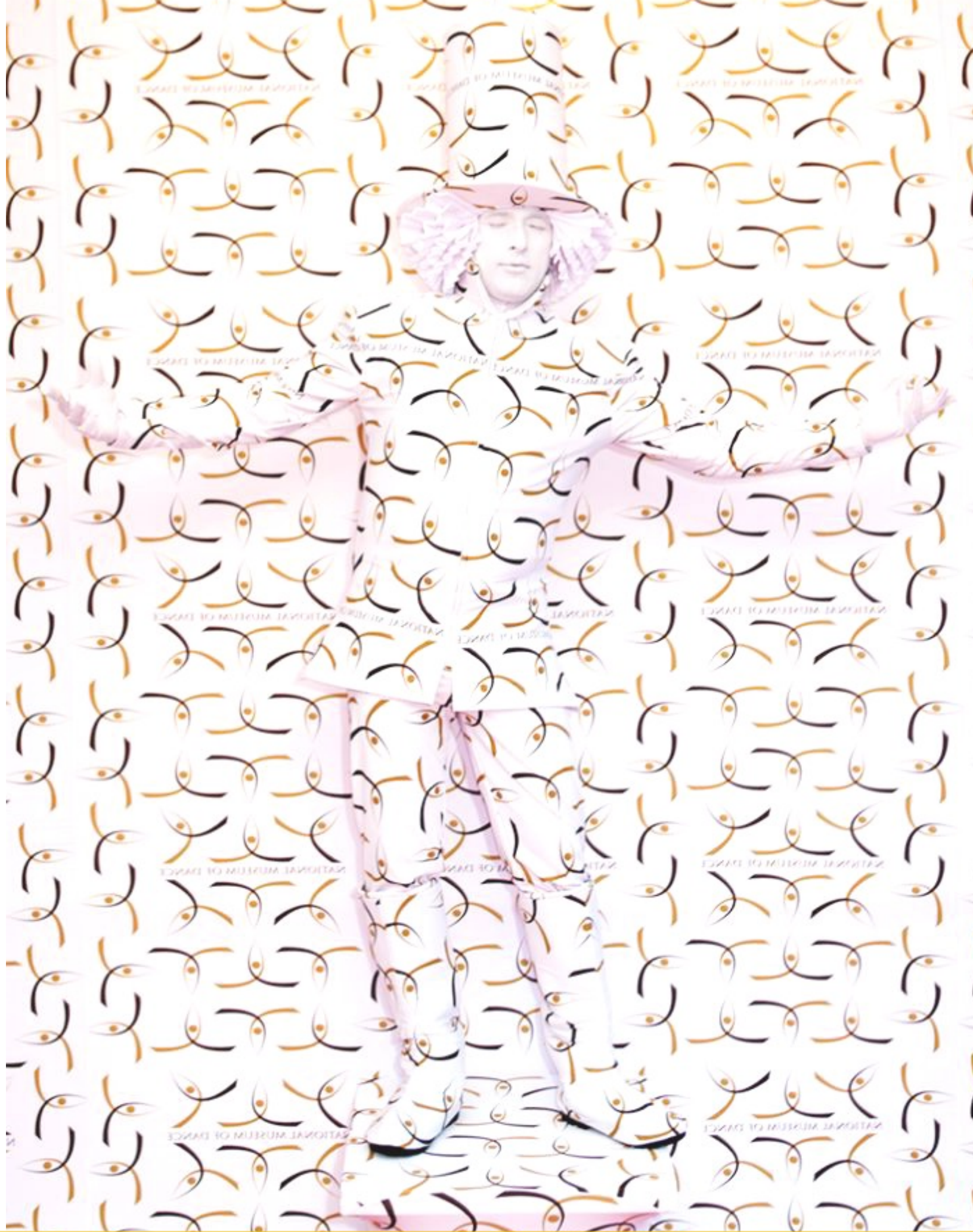
## ORNAMENT OPTIONS



# The Living Wall

**VIDEO & PICTURES**







# The Living Wall

## The Show

The Living Wall is an interactive atmosphere act combining branding solutions with a spectacular entertainment. It offers a creative alternative to the famous red carpet “Stop and Repeat”, with a live 3-dimensional effect.

The Living Wall creates the spectacular illusion of a live character coming out of the background wall. Standing as a Living Statue, the performer interacts with the audience for a great photo opportunity.

## Costume Quality

Booking 4 weeks minimum prior to the event to allow for production.

The logo to be used for the printed fabric is to be provided by the client upon booking.

The Living Wall is made of 2 parts:

- A 10'x10' “stop and repeat” backdrop.
- A performer’s costume made of the same fabric.

## Programming your show

Scheduling the show at your event is easy. Each presentation, also called a set, has a 30 minute format.

- Booking a single performer allows for one 30 minute show per hour for up to 4 hours, with 30 minute breaks between sets. Maximum number of sets: 4.

- Booking two performers or more, gives two options:

*Option 1:* Making a statement by having all your Living Statues perform at the same time. They will break at the same time also.

*Option 2:* Offering a continuous exposure of the show for up to 4 hours, by having your performers rotate on set; when one performs, the other breaks.



# Living Wall collection

[CONTACT US](#)

[MENU](#)

Let's create a Living Wall with your logo and pictures.....





# The Bubble

## The show

The Bubble show is a spectacular atmosphere act for every audience. For the event planner, the Bubble act offers the great advantage of making an artistic statement, and enhancing the theme décor of the party.

## Costume Quality

Please select a costume from our existing collection or other costumes from our Living Statue collection. We also create new Bubble costume characters on demand.

On a technical note, the Bubble itself is 6 feet wide. All accesses to the performing area must comply with a 6 feet requirement.

## Programming your show

Scheduling the show at your event is easy. Each presentation, also called a set, has a 10 minute format.

- Booking a single bubble performer allows for one 10 minute show every 50 minutes, with a 40 minute break between two sets. Maximum number of sets: 4 during a 4 hours call time.
- Booking several bubble performers, offers options to rotate the presentations for a more continuous exposure.

Please contact us to work out a set schedule for your event.

# Bubble collection

[CONTACT US](#)

[MENU](#)



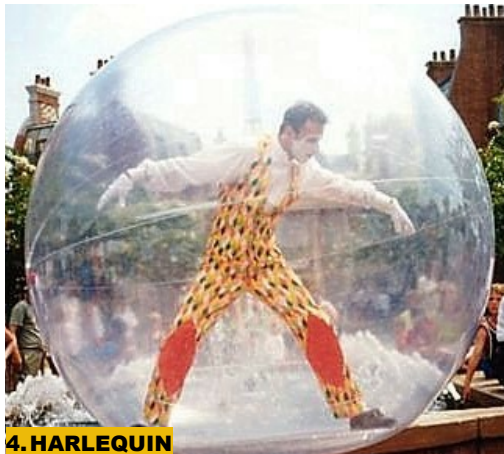
**1. WONDERLAND**  
- Yellow  
- Red  
- Copper



**2. MAGIGIAN**  
Gold & Silver



**3. LIVING BOUQUET**



**4. HARLEQUIN**



**5. PIERROT**

# The Living Arch Dragons

**VIDEO & PICTURES**





# The Arch Dragons





**ORANGE ARCH DRAGON**



**GREEN ARCH DRAGON**

# The Marionette Show

VIDEO & PICTURES









# The Living Marionette - Music & Dance Show

## The show

The Marionette is an upbeat dance and musical show, offering a travel to a beautiful world of happy feelings and connection.

The show is built on a theme, with music, dance and costumes to illustrate this travel through imagination.

The Marionette show is composed of 3 performers, two Marionette dancers and one Stilt Walker, who dance and interact to tell a story of happiness.

## Programming your show

The duration of the show is 15 minutes, usually followed by a 5 minutes photo opportunity among the audience.

## Description

The Marionette show presents the unique advantage of being adaptable to any particular theme event.

We currently offer 3 possible versions of the show:

1<sup>st</sup> version: **Mexican Marionettes** (like Cinco de Mayo) on Mexican music.

2<sup>nd</sup> version: **Matador Marionettes** on Spanish music.

3<sup>rd</sup> version: **Gangster Marionettes** and policeman on a music reminding of Chicago in the 1920s.

4<sup>th</sup> version: **Russian Marionettes** (Kusacks) on Russian music

5<sup>th</sup> version: **Dutch Doll Marionettes** on German Music.

Other versions are in preparation. We can create an interesting version on any theme you would like to develop for your event, by simply adapting costumes and music.

Please let us know of your project. Thank you



**MEXICAN MARIONETTES**



**RUSSIAN MARIONETTES**



**DUTCH DOLLS MARIONETTES**



**VENETIAN MARIONETTES**



**GANGSTER - 1920s CHICAGO**



**BULLFIGHTER MARIONETTES**

# The Living Tables

**VIDEO & PICTURES**





## **The Living Tables**



### **The show**

The Living Table is a fun piece of entertainment for cocktail hours and offer an extra touch of class and welcome to your guests.

Highlighting the festive atmosphere of your event, the Living Tables enhance your décor with a costume perfectly adapted to the occasion.

### **Programming your show**

The Living Table is very versatile and adapts perfectly to the format of most cocktail parties.

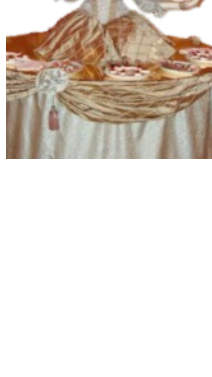
Maximum duration of a set: 30 minutes to 1 hour - Up to 2 sets - 3 hours call time.  
The Living Tables are 6 feet wide and sturdy.

# Living Table collection

NEXT ►

MENU ►

## CLASSICAL TABLES



## THEMED TABLES

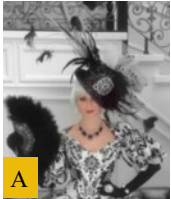


# The Living Tables - Classical Collection



1

Alternate Headpieces



A



B



C



2

Alternate Headpieces



A



B

Alternate Table style



C



D



3



4



5





**Living Tables - Themed Collection**



**Alternate Headpieces**





19



20



21



22



23



24



25



26



27

## **Contact us**

### **CALL US**

Main office: (407) 758-6643

From abroad: +1 407-758-6643

### **MAIN OFFICE**

9 Robinwood Dr.  
Longwood, FL 32779  
USA

### **WEBSITE**

[www.ArianaProductions.com](http://www.ArianaProductions.com)

### **EMAIL US**

[info@arianaproductions.com](mailto:info@arianaproductions.com)





**Thank**

**You**